

# CLEVELAND COUNTY GENEALOGICAL SOCIETY

A QUARTERLY NEWSLETTER INCLUDING McCLAIN COUNTY GENEALOGICAL AND HISTORICAL SOCIETY

Volume 25, Number 2

April-June 2004

## INSIDE

### Cleveland County GS

President's Corner	17
'89er Day	18
Legacy Trail Plaza	19
Library Acquisitions	19
In the Library	19
Delbert Larsh	20
100 Years Ago ...	21
CCGS News	24
Cleveland Co. Probates	26
Workshops	28
Calender of Events	32

### McClain County G&HS

Chautauqua Update	29
Squaring Up	29
White Bead School	30
High Boone	31
Calender of Events	32

## CLEVELAND COUNTY GENEALOGICAL SOCIETY

LIBRARY: 205 WEST MAIN, NORMAN, OK

MAILING: P.O. BOX 6176,  
NORMAN, OK 73070

PHONE: (405) 329-9180

WEB: [www.rootsweb.com/~okccogs](http://www.rootsweb.com/~okccogs)

Email: [ccgs@coxinet.net](mailto:ccgs@coxinet.net)

Hours: Tuesday 1:00-5:00p.m.  
Thursday 1:00-5:00p.m.  
Saturday 1:00-5:00p.m.

Meetings are held at 7:00 p.m. on  
the 3rd Tuesday of each month  
(except July & August)

While we appreciate the support of new and long-time members of our Society, we have two important questions to ask everyone who is interested in our programs and our goals. From time to time, we ask for helping hands to assist in projects both large and small. Think about your particular interest and how you can help.

There is a task or a Committee role for everyone. Even long distance members can contribute a few pages, a map, or a photo for our vertical files. These files are generally divided into surnames, localities, and subjects. They are not limited to Cleveland County families or subjects.

Surnames can be material on one family or an ancestral line. They can be famous or infamous, local or distant. Recently we have had a number of requests for photos of early Cleveland County buildings, both residence and business sites. Do you have something to contribute to these files?

The locality files are intended to provide aids in researching places such as distant libraries and resources, as well as material on anything to do with Cleveland County and central Oklahoma.

## PRESIDENT'S CORNER

Jo Mustoe



The subject files tend to be general sources which do not fit into the other categories. We have census forms, handout materials from past meetings and seminars, and information on lineage societies and ethnic groups, as well as a variety of miscellaneous information. So, the first question is: How would you like to help?

The second question is: How can we help you? Are we providing the kind of assistance you would like to have from your genealogical society? Are our programs, our library resources, and our research sources helping you in your quest? Let us know how we are doing.

As we ask everyone who comes into our library, how can we help you today?





## '89er Day

For the second year, CCGS participated in the '89er Day celebration in Andrews Park following the parade on Main Street. This year, we staffed the Information Booth, answering the usual questions, and directing people to the right spot for their event. We sold a little cold pop, some fresh-baked cookies, and a few rodeo tickets.

Events at the park included entertainment at the amphitheater, arts and crafts booths, food vendors, the car, truck, and motorcycle show, the Kit Car Roundup, and the Tractor Show. Events for children included Doug Sauter's Clyde and Pony Show, a petting show, a clown who made balloon animals, and Toys R Us brought Geoffrey.

Jo Mustoe has attended meetings of the '89er Day Committee, chaired by Michelle Linnemann, to gather useful information and learn about the work of various committee members. This committee was encouraged by our contribution and cooperated in providing for the

### CLEVELAND COUNTY GENEALOGICAL SOCIETY

A QUARTERLY PUBLICATION

© Copyright 2004 by Cleveland County Genealogical Society.

Please write for permission to reprint articles in this publication:

P.O. Box 6176  
NORMAN, OK 73070

#### Newsletter Team

COPY	Mary Lewis
LAYOUT	Mae Cox
MAIL	Ralph Wilson
CONTRIBUTORS	Jo Mustoe
	Joyce Rex
	Pat Starzer
	Julia Mills

### Prairie Cookies

(This recipe was found in a book dating back to 1868)

Cream together:  
3/4 cup margarine or butter  
3/4 cup sugar

Add the following ingredients until smooth:

1 egg  
1 tsp. vanilla  
Add and mix well:  
1 1/2 cup flour  
1/2 cup cornmeal (yellow or white)  
1 tsp. baking powder  
1/4 tsp. salt

Optional:  
1/2 cup raisins or 1/2 cup chopped pecan or walnuts

We'd like to ask your help in learning more about this old-fashioned cookie recipe. Did your family have a similar cookie recipe in its tradition? Do you have a recipe like it in one of your cookbooks?

Patti Rossi, of the '89er Day Committee, would like to promote these cookies as a fund raiser for our Society. She found it in an 1868 cookbook and baked a few dozen for this year's celebration. She is already thinking about variations of this cornmeal cookie for next year. Let us know what you think.



Information Booth. Ed Montgomery thought the idea was long overdue and mentioned our project in his articles for the Norman Transcript.

Patti Rossi, who coordinated food vendors for the day, helped us out by providing aprons printed with our logo, a tent, and a donation jar. Patti also provided the fresh-baked cookies.

Occasionally, we found someone who was interested in talking about history or genealogy, and of course we had our handouts available. Because of the damp, cold, and windy weather, action at the booth was a little slow. However, the donation jar collected \$34.10 for our Society.

Thanks to those CCGS Members who worked the booth: Ray and Julia MILLS, Richard and JoAnn CROSS, Betty KEMP, Mary LEWIS, Alan MONTGOMERY, and Sharron OWENS. And special

thanks to the Mills for doing the hard work of setting up and taking down.

Honored this year as Parade Marshals were the SHEARS Family, including long time CCGS member and supporter, Mildred Shears SCHUSTER. Mildred is not able to leave her home, built in 1890 by her grandfather, George Newman SHEARS. But her sister Dee Shears BARBOUR, with her family, rode in the parade and hosted a party at the house. The trolley was brought to the house, and Mildred sat in the trolley to have her picture made.

We are pleased to know that our friend and her family have now been honored by the '89er Day Committee.

### Legacy Trail Plaza II

One of the activities scheduled for '89er Day this year was the unveiling and dedication of the second



Plaza in a planned series of six along the Legacy Trail through downtown Norman. This trail follows along the railroad tracks for a few blocks north and south of the Depot. The wide sidewalks, trees and benches are intended to encourage walkers, joggers, and bikers in the downtown area.

The Plazas will provide information on the history of Norman. The second Plaza, south of Eufaula on Jones Street, focuses on the time of The Run and Statehood. A map of the Unassigned Lands has been carved in granite. A bronze sculpture depicts the Original Townsite in 1907. Benches and landscaping make it a pleasant place to stop for a short history lesson for children and grandchildren.

Bob GOINS heads the committee planning these Plazas. Jim POLSTON, Norman parks planner, is the facilitator for the city. Gene McKOWN has taken on the task of soliciting funds for this project. Plaza III is scheduled for dedication at the end of the year. ■

## IN THE LIBRARY

CCGS member Mary LEWIS's entry in Oklahoma Genealogy Society's 2003 Family Story Writing Contest won Honorable Mention and is featured in the Spring issue of the OGS Quarterly. [*Oklahoma Genealogy Society Quarterly*, Vol. 49, No. 1, 2004]

An interesting time line for a community. Depicts information about families, improvements & developments, making a living, and conflicts during the period 1840-2000. [*Hopkins County (TX) Heritage*, Vol. 21, No. 1, March 2004.]

## LIBRARY ACQUISITIONS

*Surry County, Virginia, Court Orders, 1741-1751: An Every-Name Index.* Miami Beach FL: T.L.C. Genealogy, 1992.

Blackburn, Bob L. & Alvin O. Turner  
*First Family: A Centennial History of the First Baptist Church of Oklahoma City.* Oklahoma City: Safe Sport Publishing, 1990.

**DONATED BY OKLAHOMA HISTORICAL SOCIETY LIBRARY**  
*North American Indian Tribes (excluding Five Civilized Tribes): A Bibliography of the Collections in the Oklahoma Historical Society.* Compiled by Nancy L. Laub and Jean LaR. Miller. Oklahoma City: Oklahoma Historical Society, 1994.

*Family Histories: A Bibliography of the Collections in the Oklahoma Historical Society.* Compiled by Mary Huffman and Nancy Laub. Oklahoma City: Oklahoma Historical Society, 1992.

*A Bibliography of Miscellaneous Microfilm.* Compiled by John Maricle. Oklahoma City: Oklahoma Historical Society, 2000.

*Guide to the Oklahoma Historical Society Library.* Oklahoma City: Oklahoma Historical Society, 1993.

**DONATED BY MARY LEWIS**  
Nelson-Anderson, Dannette L., and Cynthia V. Waters. *Genetic Connections: A Guide to Documenting Your Individual and Family Health History.* Washington MO: Sonters Publishing Ink, 1998.

**DONATED BY CELESTIA HATLEY**  
Brazelton, B. G.  
*A History of Hardin County, Tennessee.*

Nashville:  
Cumberland Presbyterian Publishing House, 1885.

*The 1980 Cemetery Census of Hardin County, Tennessee.* Savannah TN: Hardin County Historical Society, 1984.

Hays, Tony. *From Forest to Farm: Hardin County History to 1860.* Chattanooga TN: Kitchen Table Press, 1986.

Hays, Tony. *Hardeman County Vital Records.* Chattanooga TN: Kitchen Table Press, 1987.

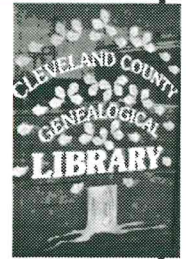
Hays, Tony. *Hardin County Court Minutes: An Annotated Index, 1820-1866.* Chattanooga: Kitchen Table Press, 1988.

Douthat, James L. *Pickwick Landing Reservoir Cemeteries.* Signal Mountain TN: Mountain Press, 1987.

**DONATED BY LISA SHEPPARD**  
Wilson, Thomas B. *Marriage Bonds of Ontario, 1803-1834.* Lambertville NJ: 1985.

*More Leeds County Ontario Cemeteries.* Brockville, Ontario: Leeds & Grenville Branch, Ontario Genealogical Society.

*1851 Census of Elizabethtown Township, Leeds County.* Brockville, Ontario: Leeds & Grenville Branch of Ontario Genealogical Society.





The first building to be erected in Norman after the 1889 Run was built in sections in Purcell. On the day of the Run it was shipped on a flatcar to Norman by Delbert L. LARSH. The building was quickly assembled on Mr. LARSH's claim adjoining the Norman townsite on the west. Its approximate site was the current location of the Norman Brewing Company, formerly Denco's Restaurant.

Delbert LaSalle LARSH was born in Edinburg, Christian county, Illinois on March 21, 1863 to Leander LARSH and Nancy MAY. Delbert had seven brothers: William V.R., Sherman P., Walter E., Ernest Carlyle., Homer P., Almon C., and Harry G. The Leander LARSH family moved to Larned, Kansas in 1878. Three of the brothers also made the Run into the Unassigned Lands

Delbert LARSH was a telegrapher in Dodge City, Kansas when the "boom" hit there. When the Santa Fe extended its lines through the Unassigned Lands in 1887, Delbert was transferred to Purcell, Indian Territory, as railroad agent. Also stationed at Purcell as chief clerk about this time was Thomas R. WAGGONER. The men became friends and worked together in several business and civic ventures.

Both men saw opportunity when the opening of the Unassigned Lands was announced. The railroad, however, discouraged participation in the Run, announcing they would fire any employee who made the Run. Consequently, both LARSH and WAGGONER resigned their positions with the railroad shortly before the Run.

## Delbert L. Larsh Norman Pioneer



LARSH, WAGGONER, and others, including Pryor V. ADKINS, John HELVIE, Charles T. GORTON, Ed P. INGLE, Tyler BLAKE and George BLAKE, organized the Norman Townsite Company. Prior to the Run, they drew up a plat for the townsite. They rode the train to Norman April 22, prepared to quickly survey the town lots. To their surprise, they found tents on site and Main Street and several other streets already staked off. The Santa Fe had sent their own surveyors in ahead of time to insure that the railroad property on the two quarter-sections set aside for the Norman townsite would not be taken by agricultural claimants.

Delbert LARSH quickly staked his own homestead claim, the quarter-section immediately to the west of the Norman townsite. Its boundaries were within present-day Jenkins, Boyd, and Chautauqua Streets, with the north boundary an imaginary extension of Main Street due east from the intersection of Main and Pickard.

LARSH and his friend Thomas WAGGONER worked closely together in the early days of Norman. They quickly started a furniture store on the business lots LARSH claimed the day of the Run. LARSH later sold the west half of his homestead claim to WAGGONER. WAGGONER was elected Norman's first mayor, and LARSH served on the first council.

On December 1, 1889, Delbert LARSH and Mrs. Nellie SINGLETON were married in Purcell. They had two children, both of whom died in infancy.

The Cleveland County Historical Society, in its 1974 publication *Pioneers and Early Settlers of Cleveland County, Oklahoma, 1889-1925*, cites D. L. LARSH as one of the most active of the early developers. LARSH's homestead is now honored as the WAGGONER-LARSH Historic District.

An undated clipping of an article in the Norman Transcript states that "LARSH, WAGGONER, and W. T. WALLACE donated a quarter-mile strip, 100 feet in width, to serve as the thoroughfare to OU from downtown Norman—present day University Boulevard. LARSH also donated a strip 50 feet in width along the north boundary of OU between Asp and Elm—present day Boyd Street."

This same article states that LARSH was active in incorporation of the city of Norman, was elected trustee, led the movement to place the courthouse in its current location, and was influential in the selection of Norman as the home of the University of Oklahoma.



In 1890 LARSH became secretary of Citizen Bank. By 1895 he was on the Board of Directors of the Norman Building and Loan. A letter dated July 23, 1895, with the heading "Mayor's Office, D. L. LARSH, Mayor" indicates that he was mayor of Norman at that time.

Georgetta LARSH STARZER recalled that Delbert and his brother, Harry G. LARSH, bought a "sand plant" in Fall River, Kansas, tore it down and moved it to Roff, Pontotoc county, Oklahoma. Georgetta's father, Ernest C. LARSH, was hired as plant manager, with responsibility for rebuilding the plant, getting it into operation, and running it.

Delbert LARSH was a very wealthy and generous man. He helped several nephews and nieces with college expenses. When these nieces and nephews married, each received a \$1000 wedding gift from Delbert, a remarkable sum of money during the 1920s and 1930s in Oklahoma.

Georgetta LARSH STARZER recalls that Delbert loved to entertain. "He was a member of the prestigious Oklahoma Club in Oklahoma City. On occasion he would take a group of 'old maids' from Norman to the Club as a special treat." Georgetta recalled one occasion when Delbert took her and her cousin Mildred LARSH to the Club.

Delbert LaSalle LARSH died in Norman October 17, 1943, and is buried in Norman's I.O.O.F. Cemetery.

## Newspaper Abstracts

### A Hundred Years Ago...

Norman Democrat-Topic • Friday, June 3, 1904

(Editor's Note: All newspaper abstracts are typed as originally printed.)

Everything in Hardware at MAGUIRE's. Agent for Aermotor Wind Mills. Will run with less wind than any Mill on the market. Also carry a complete line of PUMPS of all kinds. Call and get my prices. Jas. D. MAGUIRE.

The Louisiana Purchase Exposition — WORLD'S FAIR — St. Louis, Mo. — April 30 to Nov. 30 Season Tickets. Rate, eighty per cent of the double one way (\$27 from Norman) for the round trip. Tickets on sale daily from April 15 to Nov. 15 inclusive. Final limit Dec. 15, 1904. J.J. BAKER, Agent, Santa Fe Ry.

One of the finest ten-room houses in town for rent. Phone No. 10 for office, No. 169 for residence. E. F. NESBITT, Agent. At the Andrew KINGKADE Company's Office.

### Territorial Notes

Clinton is about one of the first towns to advertise a Fourth of July celebration.

The Rock Island and Katy roads cannot agree on a site for a union depot at South McAlester, and as a result each road will build one of its own.

The C. C. POTTENGER Wholesale Drug company of Shawnee has gone into the hands of a receiver.

From the fourteenth of April to the sixteenth of May forty-five rural routes were established in Oklahoma.

### [Twelfth Annual] Oklahoma University Commencement

The following named students graduate in the degrees named: Bachelors of Arts — James Ralph BELL, Winifred Edith BENNETT, Sardis Roy HADSELL, Lot Morrill JONES, Lillie Kate MILLER, William Arthur MORTER, Catharine SARCHET, Gladdie UTT.

Bachelor of Science — Charles Townsend KIRK.

The following in the School of Music take the degree of Bachelors of Music: Bernice RICE, Leona Alice STUBBLEFIELD.

The degree of Pharmaceutical Chemists embraces the following: Eben Elwood GRIDLEY, Rosa Dorothea HADDIX, Ben OWENS.

### Local News

C. H. BESSENT purchased the C. W. BIGGER building last week.

B. T. LAWSON purchased the West Side meat market of N. J. DAVIS last week and will conduct an up-to-date meat shop.

Miss Abbie WOMACK left Saturday night for her home in Cameron, Texas, after an extended visit with her sister, Mrs. Ed. H. BURKE.

CONTINUED >>



continued

## A Hundred Years Ago...

**Norman Democrat-Topic  
Friday, June 3, 1904**

L. C. KENDALL and son, Carl, returned last Saturday night from an extended trip in Oklahoma and Indian Territory. They report excellent sales.

Mrs. N. J. TARPLEY, sister of S. J. WILKINS, died at Rowe, Texas last week. Mrs. Tarpley formerly lived in Noble township up to about three years ago.

Chas. STANLEY this week purchased the Joe CLAYBROOK cleaning and pressing establishment, and took charge Wednesday. Mr. CLAYBROOK will return to his home in Tennessee.

Robt. L. EWING has just finished an eight months school at the Falls school District 31. The school board has employed him for another eight months term and raised his wages from forty-five to fifty dollars per month.

Miss Josephine CLARK, who has been visiting Miss Lizzie ROBERTS, returned to Oklahoma City Saturday.

C. W. BREWER and family returned Tuesday after several weeks visit in Arkansas, Tennessee, and Ohio.

Miss Elzadia BARBOUR left Wednesday afternoon for Waco, Texas, where she will spend the summer with friends and relatives.

Mrs. W. H. MEYER returned from Eastern Kansas last Friday night. Her father, who has been seriously ill, is much better.

President D. R. BOYD delivered an address to the Oklahoma City high school graduates last night.

Mrs. M. B. PARKER and children came down from Oklahoma City Saturday to visit her parents, Mr. And Mrs. J. W. FOSTER.

D. BORJES left Saturday for Germany where he will make a visit of several weeks in the Fatherland. He went by way of Galveston.

H. H. REID was a business visitor in Indian Territory points this week.

### County News

#### Franklin

Little Willie WELLS was quite sick last Sunday.

Mr. Ed MARTIE has returned from Sulphur. His health is much better on his return.

We had a little runaway in Franklin last Monday evening. One man got his buggy broke up a little.

Mr. And Mrs. Arthur WYNN, Mr. S. J. SHULTZ and Miss Cora KEITH took a pleasure trip on Pecan Creek last Sunday.

The COURSEY-MATTOX trial was postponed to await the action of the grand jury. Mr. COURSEY's bond was raised to the sum of \$1000.

#### Pleasant Grove

Mrs. PATTERSON purchased a new washing machine Saturday.

Mrs. J. DICKERSON was called to Chickasha because of the death of her sister's child.

Since the good rains we have been having, the farmers are all very busy trying to kill the weeds.

Mrs. Jay SHOTTENKIRK received the sad news of the death of her grandmother at Carthage, Missouri, Saturday.

Miss Minnie and Mr. Noah ARNOLD treated their young friends Sunday evening to ice cream. All reported having enjoyed themselves very much.

#### Moore

The ladies of the M. E. Church served supper, also ice cream and cake at the school house Monday afternoon and evening. The proceeds go toward paying off the remaining church debt.

Ed CLING's residence east of the lumber yard is nearly completed and will be both a handsome and commodious dwelling.

C. H. BRAND returned Tuesday from a business trip in the new country.

Little Tiary LEVERICH had the misfortune of breaking his left leg in two places below the knee one day last week. He is doing nicely at present, but the physician states it will be at least a six weeks confinement to his room.

Will JURRY and family departed Wednesday for a week's visit in the Creek nation and to look after their farm.

Mrs. REIFEL and son George, mother and brother of Carl REIFEL, arrived here Friday after an absence of two years.



**Marriage License**

Jas. M. MILLS, 24.....Lexington  
Maud D. CROCKER, 18....Purcell

Geo. W. SHARP, 33.....Womack  
Emma BREWTON, 17...Womack

**Local News**

The Woodmen of the World will unveil a monument to the memory of Dr. MONTGOMERY of Denver camp, at the Odd Fellows cemetery on Sunday, June 12, at 3 p.m. Everybody invited.

The eight-months-old son of Mr. And Mrs. SEDLAEEK died Wednesday near Moore of measles and typhoid fever.

**Estray Notice**

Territory of Oklahoma }  
County of Cleveland }ss

Notice is hereby given that on the 30th day of May, A.D. 1904, one A. H. BROWER appeared before me and made affidavit of the taking up of the following described estray:

One brown roan cow, about 10 years old, branded WM on the right side and H on left hip; marked underbit in right ear and slit in left ear, That the residence of said taker up is on the northeast quarter of section 25, township 8, range 2 west; that his postoffice address is Noble, Oklahoma; that the same was taken up on the 3rd day of May, A.D. 1904 [sic]

Witness my hand and seal this 30th day of [Seal] May, A.D. 1904.  
F. O. MILLER, County Clerk

One of the first buildings in Norman was hauled on the day of the run by Charles T. Gorton.  
*Photo courtesy of Womack Collection.*

**New Marriage Books**

Our Publications Chairman, Evelyn Parker, recently completed indexing another set of Cleveland County marriages. Two new titles are now available for purchase.

*Cleveland County Marriages 1934-1938* and *Cleveland County Marriages 1939-1942* are each priced at \$16.20, which includes sales tax, plus \$2.40 per book if you wish to have them shipped. Order from Cleveland County Genealogical Society, P.O. Box 6176, Norman OK 73070.

**Libraries for the Future**

Jeff Scherer, consulting architect, was in Norman May 10 to present his executive report summarizing the findings of the Libraries for the Future subcommittees. The focus will be on building a new central library in downtown Norman.

The architects are looking at proposed sites and will begin designing the features called for by the committees. Watch the Norman Transcript for announcements of future hearings on this project.





# CCGS News

## Things We Need

### More Library Volunteers

Greeters to help with sign-in at monthly meetings

Hospitality chairman to coordinate refreshments (table setting & drinks) for June, September, and December meetings

Someone to create a simple database for indexing records

People to enter facts into a database

*Please let Jo know where you can help!*

## Society Meetings

### MARCH

For the CCGS Meeting in March, we hosted Laura Martin from the Oklahoma Historical Society Library. Laura quickly mentioned the resources we are familiar with, such as census rolls, the newspaper archive, and the Native American Collection.

She then focused on those categories not widely used. Military resources, the photo collection, city directories, as well as vertical and biographical files can be helpful. She also left with us four books which serve as guides to the OHS Collections. They are reviewed elsewhere in this issue.

While we understand that access to the Collection is in a state of flux in anticipation of the move to the new Oklahoma History Center in 1907, Laura emphasized that all materials are available, but are likely to be in closed stacks which are now housed on all four floors of the building. Therefore, it will be necessary to allow time for finding a particular resource, to

make use of the card catalogue as much as possible, and to ask questions of the staff.

We were pleased to have five winners who had good answers to her quiz on Oklahoma history. This meeting was held at the First Church of the Nazarene on Porter.

### APRIL

Greg BOYD spoke on Federal Government Web-Research: Land and Map Resources. He showed screens from the Web site of the General Land Office, Bureau of Land Management:

<[www.glorerecords.blm.gov](http://www.glorerecords.blm.gov)>

Here one can search for land patents by state, surname, and township/range. Copies of the actual patent can be generated on the screen.

Another useful web site is that of the US Geological Survey: Geographical Names Information System (USGS/GNIS), <[http://geonames.usgs.gov/pls/gnis/web\\_query.gnis\\_web\\_query\\_form](http://geonames.usgs.gov/pls/gnis/web_query.gnis_web_query_form)>.

This site will yield information about cemeteries, churches, forts,

and other features. Various types of maps, including topographical, can be created and printed.

The National Atlas, <[www.nationalatlas.gov](http://www.nationalatlas.gov)>, offers map and feature lookup. Townships can be mapped, and it is possible to create and print custom maps.

Greg's Web site, <[www.boydit.com](http://www.boydit.com)> contains links to these and other genealogy research sites.

Related sites on Greg's handout, not discussed, include <[www.topozone.com](http://www.topozone.com)>, <<http://terraserver-usa.com>> for satellite imagery, and <[www.census.gov/geo/www/maps/](http://www.census.gov/geo/www/maps/)>.

Also mentioned as sources for cemetery transcriptions were <[www.usgenweb.com](http://www.usgenweb.com)> and <[www.interment.net](http://www.interment.net)>.

*In Society business*, Elizabeth LOEFFELHOLTZ, Sharron OWENS, and Nova HORNBACK were named to the nominating committee.

## Womack Books Available

CCGS has available for sale a limited supply of Cleveland County historian John WOMACK's book: *Norman—An Early History, 1820-1900*. This is a second printing, in paperback. Price is \$20 plus sales tax.



## Family History Writing Group

Norman writer and teacher Ann CHAMPEAU suggests a writing project one can start now as a meaningful Christmas gift for children, grandchildren, and other relatives.

Make a booklet of what Christmas has meant to you over the years. These topics might get you started.

- How you celebrated Christmas as a child
- Places where you've spent Christmas
- Meaningful holiday experiences
- Things you do every year and why
- Traditional holiday foods

Your editor would add to her own list copies of the Christmas letters our family sent to friends and relatives every year. Together, they comprise a concise history of our nuclear family.

The Family History Writers' Group meets at 10 a.m. on the second Wednesday every month at the CCGS Library. Participants share bits of their writing and discover new topics for future writing.

This month's topics may range from grandmothers to family tales; next month it may be travel stories or how we found that elusive ancestor.

### Future Writers' Group

meeting dates are

June 9

July 14

August 11

## Around & About

### Changes Made Due to NGS Financial Losses

The National Genealogical Society has suffered financial losses in the last few months. Those financial losses have had a profound effect on NGS programs. NGS recently announced it will combine the 2005 GENTECH Genealogy and Technology Conference with the 2005 NGS Conference. The combined conferences will be June 1-4, 2005, in Nashville, Tennessee.

Also, the Arlington, Virginia-based NGS has decided to place its headquarters, the historical Glebe House, on the market and move into rented quarters. Books in the NGS Library at Glebe House will be moved to the St. Louis County Library where the NGS circulating library was placed a year ago.

(As reported in the Family History Network Newslines 30 March 2004)

### GENEALOGY SCAMMER GETS PROBATION

Visitors to the genealogy web site of Elias Abodeely of Cedar Rapids, IA, signed up for what they thought was a five-day trial period. Then they found out they couldn't cancel their memberships and they were charged for it. Abodeely was given three years probation for scamming genealogists out of thousands of dollars. Every time one of his websites is shut down, he just opens another one. We all should be cautious of suspicious genealogical web sites.

## Bits & Pieces

**Photographs of commemorative flagholders and plaques** of various organizations, as well as basic information about many of these fraternal organizations can be viewed at <<http://www.rootsweb.com/~srgp/flaghold/flaghold.htm>>

Think you want to do **oral history interviews** with family members? These guidelines are prepared for use by students, but the suggestions are applicable to anyone. Gather ideas to get started on <<http://www.historychannel.com/classroom>> Find the Related Links, then click on "Oral History Interview Guidelines."

**Do you have an ancestor or relative who received the Medal of Honor** for bravery and heroism? Check the lists on <<http://www.army.mil/cmh/Moh1.htm>>

**If you are stumped by a term** you found in your genealogy research, turn to a glossary. <<http://www.genealogy.com/Glossary/glossary.html>>

**Find a calendar**—many kinds of calendars—when you explore this link. <<http://www.calendarzone.com/>>

**Sometimes you know the town**, but not the county. Try the search engine at <<http://resources.rootsweb.com/cgi-bin/townco.cgi>>



**CLEVELAND COUNTY, OKLAHOMA  
INDEX TO PROBATES  
1890 - 1928**

Packet No.	Name	Filing Date	Date of Death	Will	Heirs and Other Information
855	Holman, William P. Holman, Sallie	11 Feb 1927	10 Apr 1902 15 Oct 1910	(H) (W)	Joint Probate Son & Adm: D. L. Holman
61-L 61	Holsonbake, Lewis D.	10 Apr 1915	21 Sep 1901		Widow: Serepta J. Holsonbake
60-L 60	Holsonbake, Serepta	20 Mar 1915	15 Oct 1914		Widower: Lewis D. Holsonbake
414	Holt, Frank	25 Apr 1916	06 Jul 1915		Died in Mineola, NY Widow: Leona S. Holt Son: Oscar Holt Dau: Daisy Leona Holt
581	Hoover, J. A.	10 Jun 1921	20 May 1921	Y	Widow & Adm: Sallie R. Hoover 5 Daus & 6 Sons
2	Hoover, Lourinda	Aug 1900	19 Mar 1900		Widower: Silas C. Hoover
UN-G	Hopper, James	06 Feb 1897	Aug 1886		Died in Farris County, TX William Hopper (14)
UN	Horton, Rose	27 May 1896	09 Jan 1895		Died in Cowley, KS Minors: Lawrence M. & Ollie Horton, Chilocco Indian School, Arkansas City, KS George O. Horton (over 21)
204	Horttor, John	18 Mar 1908	16 Mar 1908		Widow: Rebecca Horttor Minors: B. F., Bessie, Kathryn & Jackson Horttor
UN	Houghton, R. A.	23 Nov 1894	06 May 1894		Widow: S. E. Houghton Chn: Otis, Clara & Reuben Houghton (Last 2 Minors)
333	Houser, Abram W.	17 Aug 1912	11 Aug 1912		Grdau: Tinnie R. Lee Glick (23) Bro: James Houser Sis: Brucilla Beusch
UN	Hover, E.	21 Aug 1900			File Incomplete
721	Howard, Edwin L.	05 Apr 1923	27 Dec 1922	Y	Widow: Carrie A. Howard Will Filed 23 Feb 1923, Polk Co, FL
247	Howard, Henry Howard, Martha A.	04 Oct 1909	Sep 1901 Aug 1909	(H) (W)	Joint Probate
433	Howarth, Melvin Leroy	07 Mar 1917	13 Feb 1917	Y	Sons: Floyd Omer & Carl Leroy Howarth Daus: Myrtle Junie & Pearl Winnifred Howarth Sis-in-law & Exec: Junie Fox
646	Howell, Roberta Walker	26 Dec 1922	09 Dec 1922		Widower: Ernest Howell Nondie, Norma Gene & Ernest Boyd Howell
261	Howlett, Emma	17 Mar 1910	18 Feb 1910		Nephew: Willis A. Howlett
896	Howry, G. E. Howry, Lizzie	06 Oct 1927	17 Jul 1924 04 Oct 1926	(H) (W)	Joint Probate Sons: George & Lon Howry Daus: Lou Wrinkle, Susie Elliott, Rindie Graham & Mae Wilson
844	Hoye, Thomas F.	14 Jan 1927	17 Nov 1915		Widow & Adm: Susan I. Hoye
167	Hubbard, Sophrana	08 Feb 1907	18 Dec 1906		Heirs: William (Adm) & A. F. Hubbard, Nettie Potts & Jamie Clark



PACKET No.	NAME	FILING DATE	DATE OF DEATH	WILL	HEIRS AND OTHER INFORMATION
548	Hudgens, Grover C.	06 Aug 1920	24 Jul 1920	Y	Sis & Adm: Lillie B. Thompson
796	Hudgens, Mae	27 Mar 1926	23 Jan 1926		Widower & Adm: H. R. Hudgens Bros: W. J., U. S. & R. D. Nixon
641	Hull, Lee V.	14 Nov 1922	15 Aug 1922		Mother: Cora Hull Bro: Gray B. Hull
504	Hull, Lewis F.	08 Jun 1919	14 May 1919		Widow & Adm: Cora E. Hull Sons: Gary B. & Lee Hull
650	Hunt, Foy	13 Feb 1923	09 Jul 1922		Widow: Edna Hunt Father: Tom Hunt
599	Hurst, Mahulda	01 Nov 1921	15 Oct 1921		Heirs: Simeon, Dave, Marvin, Curtiss, Ira & Floyd Hurst, Lizzie & Ethel Wicker
486	Hutchison, H. L.	26 Nov 1918	12 Oct 1918		Widow: Annie D. Hutchison (62) Chn: Lon L. (41) & Ernest S. Hutchison (34), Mary H. Williamson (27) & Lula P. Johnson (42)
114-L 114	Ille, Lepold	12 Nov 1924	18 Oct 1924	Y	Widow: Johanna Ille
291	Inglis, Sarah E.	05 Apr 1911	23 Feb 1911	Y	Sons & Execs: George & C. W. Inglis
58-G-L 58	Isom, Grover C.	17 Aug 1914			Minor: Theima Aline Isom
943	Ives, John R.	28 Aug 1928	24 Aug 1928	Y	Sons: R. L. & W. A. Ives Dau & Exec: Emma Dawson Son-in-law: W. H. Dawson
684	Ives, Rebecca	18 Feb 1924	11 Jan 1924		Widower & Adm: J. R. Ives Sons: R. L. & W. A. Ives Dau: Mary E. Dawson
685	Jack, Maggie	23 Feb 1924	17 Dec 1921		Widower: W. O. Jack Sons: Frank, Jesse & Robert Jack Daus: Blanche Blackwell (Adm), Nora Howell, Pearl Wyatt & Nadine Jack
UN	Jackson, Emma I.	09 Feb 1907			File Incomplete Adm: W. J. Jackson Minor: Robert E. Williams
345	Jackson, Harriet	03 Mar 1913	1910		Chn: John, Branch, Georgia & Willie Jackson
UN	Jackson, J. A.	02 May 1894	01 May 1894		Bro & Adm: T. W. Jackson
310	Jackson, W. J.	02 Jan 1912	27 Dec 1911		Froma May Barbour, R. O. (Adm) & W. E. Jackson, Thelma Benford & Gertrude Buford
225	James, Armena T.	28 Dec 1908	24 Oct 1908	Y	Dau & Agt for Adm Exec: Isabel James Clarke Exec: Frank James
344	James, J. D.	27 Jan 1913	22 Jan 1913		Son & Adm: L. R. James
290	James, W. C.	07 Mar 1911	19 Jan 1911		Widow: Amanda L. James
134	James, William Thomas	23 Oct 1905	06 Oct 1905	Y	Widow: Pauline James (29) Bro & Exec: Fred W. James
494	Jennings, Elisha P.	06 Mar 1919	24 Jan 1919	Y	Widow: Sarah N. J. Jennings 11 Chn
UN	Jennings, Gustav Adolf	24 Jan 1896	Jan 1896		Family in Germany

Editor's Note: Information given on each record includes the packet number, name, filing date, date of death, will heirs, and other information. Many of these cases contain a great deal of information concerning relationships of heirs, guardianships, property descriptions, assets, liabilities, and debts due. Copies of each probate packet are available from CCGS.



The Cleveland County Genealogical Society will host its

## 19th Annual Summer Seminar

Saturday, July 17, 2004 • 9:00 am to 4:00 pm  
At the Brand Center • 501 East Main St. • Moore, OK

**PAMELA BOYER PORTER**, CGRS, CGL, our keynote speaker, will present four topics:



- **Clues In Missouri Migration**  
Explores the migration paths and geographic roots of settlers and how these previous residences often determined where they settled within Missouri.
- **West From Missouri** Focuses on why emigrants converged on Missouri in the 1800s to leave for points West.
- **Rogues and Rascals: Divorced, Litigious, or Downright Criminal Relatives** Takes a humorous look at the unsavory characters who add spice to our family stew.
- **Mapping Software For Genealogists** A look at mapping software that helps prepare a visual picture of dry statistics like deed platting or changing county boundaries through the years.

For a registration brochure, send a business size, stamped, self-addressed envelope to:

Cleveland County Genealogical Society,  
P. O. Box 6176, Norman, OK 73070

Or send an e-mail to [ccgs@coxinet.net](mailto:ccgs@coxinet.net).

For more information see the CCGS Web site  
<http://www.rootsweb.com/~okccgs>

**Cost:**

Register by July 1st: \$30 (Lunch included)  
After July 1st: \$30.00 (Lunch NOT included)

## • Workshops •

### Greater Four-States Genealogy Fair

June 19, 2004  
First Christian Church, 2414 N. Main, Miami OK  
<sacc361@junct.com> or 918-674-1168

### Tulsa Genealogy Society

Rhonda McCLURE  
July 9 & 10, 2004  
John Knox Presbyterian Church, Tulsa OK  
<www.tulsagenealogy.org>

### Frontier Researchers Genealogical Society

"Genealogy at the Fort" Ancestor Fair  
August 21, 2004  
Bethel Lutheran Church, Ft. Smith AR  
<bkcole@earthlink.net> or <safrantz737@aol.com>

### Federation of Genealogical Societies

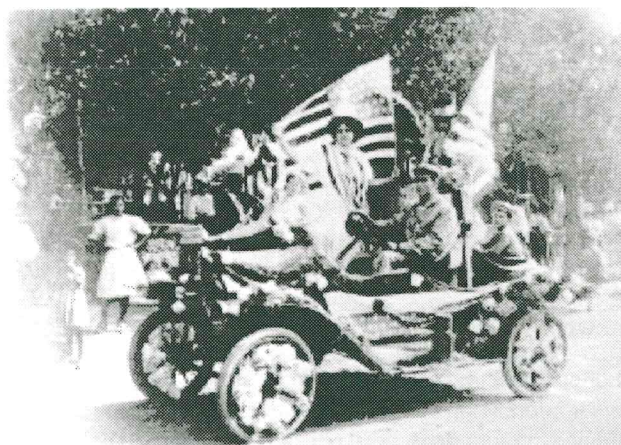
Legends Live Forever: Researching the Past for  
Future Generations  
September 8 - 11, 2004  
Austin Convention Center, Austin TX  
<www.fgs.org> or 888-FGS-1500

### Muskogee County Genealogical Society

Ancestor Fair  
September 25, 2004  
Muskogee OK  
<mucogeso@yahoo.com> or 918-682-2279

### Gregath Publishing Company

Cyndi's List Seminar 2004  
Cyndi HOWELL  
October 16, 2004  
Grove Civic Center, Grove OK  
<www.gregath company.com/workshop>





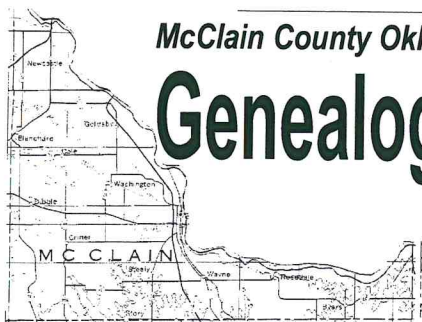
# Genealogical & Historical Society News

Joyce Rex, Editor

Volume 25 Number 2

June 2004

To research, preserve and perpetuate the history of McClain Co. OK and its people.



## McClain County Museum

203 West Washington  
Purcell, Oklahoma  
(405)-527-5894

### Hours of Operation

Weekdays  
Noon to 4:00 P.M

Special group tours may be arranged by calling the above number in advance. We do NOT return long distance calls.

The collections of the Museum include eleven rooms of pioneer furnishings, clothes, artifacts and tools.

Our record room includes periodicals, research publications, over 1000 photographs and individual family histories, in addition to our published books.

Our microfilm collection, with two readers, is located at the Purcell Public Library, 919 N. 9th. 405-527-5546. Hours of operation are daily (except Sundays) 9-5.



## CHAUTAUQUA UPDATE

Changes and updates to the Chautauqua plans have occurred since the last issue. Keep your eyes alert in local publications for any other changes that may occur.

First of all, due to a lack of electrical outlets in the park in front of the Purcell Library, the LOCATION of the Chautauqua has been changed to CHANDLER PARK on the south side of Purcell, across from the Golf Course and the Swimming Pool. For those coming from out of town, the south Purcell exit off I-35 is the closest to the area. The dates listed are still from June 10th through the 15th.

The scholars will be honored elsewhere in the area with MORN-ING programs and breakfasts at the McCloud, Noble, Shawnee, Norman, Moore, Newcastle and Blanchard Public Libraries. Ardmore and Pauls Valley will benefit from a Santa Fe R.R. morning trip one day.

Community partners will each be sponsoring a day and events will begin daily in Purcell at 1:00 p.m. except for Saturday, which will include the MAIN STREET JUNEFESE and parade ending at the park grounds. Daily events

under the tent will include different special programs from "Frontier Living" by the Home-makers groups to an award winning Chickasaw Dance Team.

Tour buses will visit the area ranches, historic sites and the Museum. The MUSEUM will also be open each day from 1:00 – 4:00 p.m. for visitors, including Saturday and Sunday. Food and snack booths also will be available. Music will be provided by local entertainers.

The Chautauqua will be introduced by Dolly Madison, from her perspective (and costume), then the feature speaker for the evening who is introduced and performs for 30 minutes. The final portion of the evening consists of group interaction with the speaker (a different one each night), a time to ask questions about the era and how it might differ from the present society.

The speakers are each scholars and experts in their field. Characters are William CLARK, YORK, who was CLARK's boyhood friend and servant, TECUMSEH, John Jack ASTOR and SACAGAWEA. All were involved in the LEWIS and CLARK Expedition.





# McClain County Oklahoma Genealogical & Historical Society

## 'Squaring Up' For Statehood

Joyce A. REX

Stirring up tremendous controversy and many newspaper editorials in the latter part of 1906 was the *Squaring Up Committee*. It was composed basically of Norman Commercial Club members Edward B. JOHNSON, Charles SMITH, Lum ADKINS, Walter GOLDSBY, O. E. RICE, W. B. HOWARD, J. B. DUDLEY, Pryor ADKINS, J. D. MAGUIRE, John E. MILLAR, J. F. NORMAN and J. S. BUCHANAN.

This committee circulated a petition to farmers in the northern area of District #18 (now McClain County) to combine the area with Cleveland County and presented it to the Constitutional Committee on County Boundaries. The petition, if adopted, would have made a "square-shaped county divided by the Canadian River."

The petition was mainly backed by Norman businessmen and residents who also owned land and ranches in the northern part of present day McClain County. They persuaded

their District #18 neighbors to sign the petition with the promise of a good river bridge. Since many of this area did their business in nearby Norman, it was a logical idea. However, later they recanted their signatures and claimed misrepresentation.

The committee's pro argument, that it would remove the heavy tax burden on account of so many Chickasaws and Choctaws not having to pay District #18 taxes, was refuted by the opponents who opposed the "selfish Norman scheme" and who claimed they did not want to "pay the debts of Cleveland Co."

The Purcell paper claimed the Norman group ignored a similar petition signed by southern Cleveland Countians who wished to be annexed to District 18, especially after Norman's opposition to building a high school in the southern part of that county!

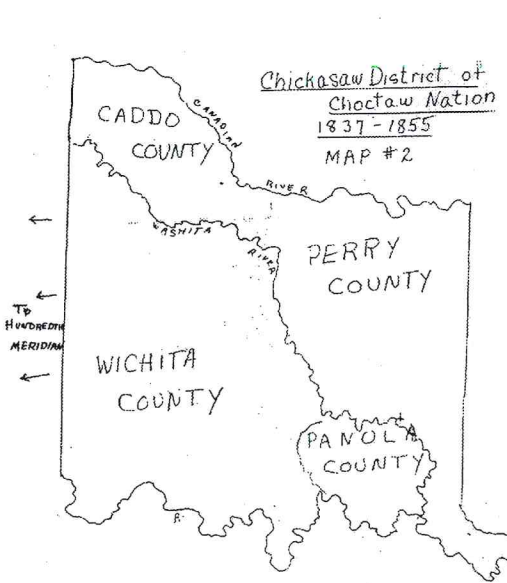
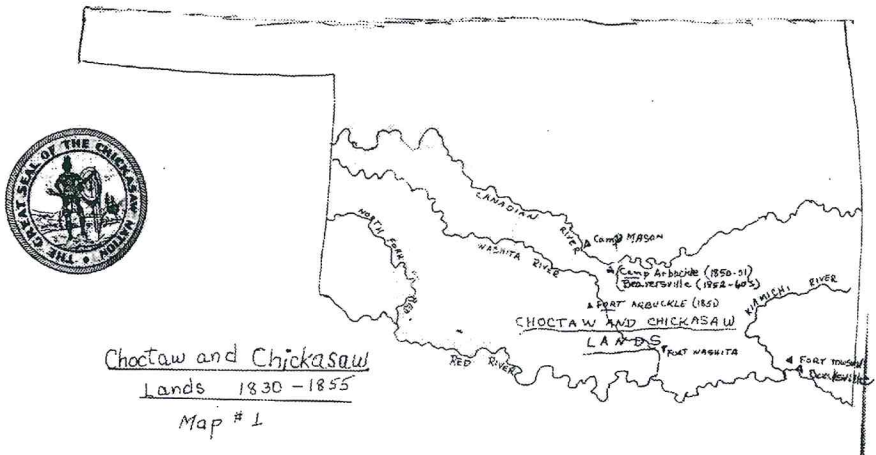
However, the county boundaries meeting in December 1906 decided not to combine the two, and separate counties were formed. Cleveland County kept its territorial name while District 18 became McClain County. The original proposed name of Jefferson County had been backed by separate Jefferson Clubs in Wayne and Purcell.

Source: *McClain County History and Heritage, Book 2*, by Joyce REX.

## WHITE BEAD SCHOOL

This was a Methodist Church School, established in 1879 by the Rev. John C. POWELL of the Pauls Valley Circuit (Pickens Co.,

### LOCATING YOUR OKLAHOMA ANCESTOR. CHICKASAW NATION MAPS (1830-1907)





I.T.) in Whitebead Hill. It was the originator of the Pierce Institute.

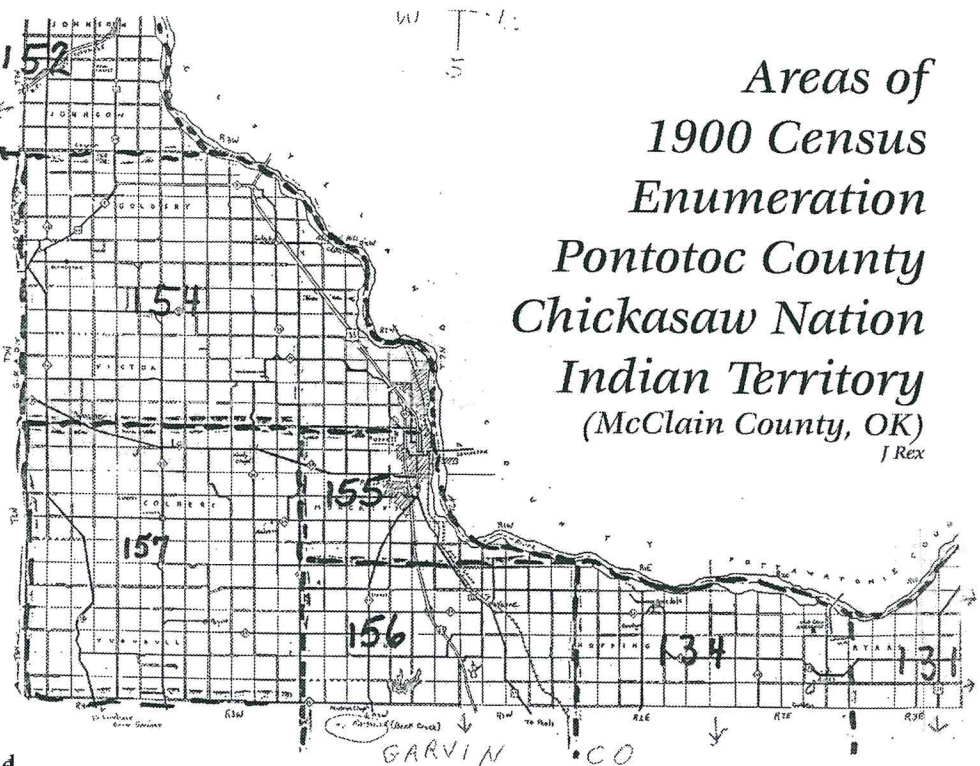
In 1884, Rev. POWELL and W. G. KIMBERLIN, a prominent businessman, turned over the \$3000 two story frame building to the Methodist Indian Conference. In the years 1885-1888, when it was at its peak, it enrolled 200, with a boys' dormitory and a 6 room girls' dormitory. It had both white and Indian students.

By 1890, it became just another small school. It was damaged by a windstorm in 1904 and the lumber was used by the Methodists in building another church. When the railroad bypassed the town, it and the school gradually dwindled.

Source: *Garvin County Pictorial History*, 1957.

### Hugh Boone — A Mini Bio

Area pioneer, Hugh BOONE, died at his home following a heart attack Saturday, May 14, 1960. Born in Clay County, Texas in 1871, Boone came as a young man to Purcell in 1889. He engaged in the ranching business for many years and also was the sheriff and county treasurer of McClain County.



## Areas of 1900 Census Enumeration Pontotoc County Chickasaw Nation Indian Territory (McClain County, OK)

J Rex

However, he did move back in November 1894 to Pottsboro to marry Miss Florence CROW. The couple lived at Jolly, Texas, where their daughter, Ina, was born December 6, 1898.

Ina BOONE (Her obituary states she came to Purcell in a covered wagon with her parents.) grew up, graduated from Purcell High School in 1916, attended Stephens College in Columbia, Missouri, and graduated from OU in 1920.

She married F. R. (Frances Rawn) SMEDLEY January 3, 1925, and they had two sons, Bill and Rawn. F. R. died September 11, 1975 and is buried in Purcell Hillside Cemetery. Son Bill and his wife recently celebrated their 50th wedding anniversary according to a recent *Purcell Register*. Many Smedleys are listed in area phone books.

Florence Crow BOONE's tombstone in Purcell Hillside Cemetery lists her birth February 4, 1875 and her death as June 9, 1947.

**Obtain:** Case Files of Applications from FORMER Confederates for Presidential Pardons (14,000) (Amnesty Papers, 1865-1867) NA M1003 State, applicant, combined index. <[www.civilwardata.com](http://www.civilwardata.com)> Demo Personal.

**Marriages:** Illinois 1763-1900 <<http://www.sos.state.il.us/departments/archives/marriage.html>>

### Basics of Good Computer Research

1. Keep in mind what you are looking for.
2. Look for it in an organized fashion
3. Evaluate what you find by comparing it to what you already know.
4. Carefully confirm source.

Source: *Genealogical Helper*, January-February 2000






Cleveland County Genealogical Society  
P. O. Box 6176  
Norman, Oklahoma 73070

Non-Profit  
Organization  
U.S. Postage  
PAID  
Norman, OK  
Permit No. 303

RETURN SERVICE  
REQUESTED

**Please check the mailing label  
on this issue.**  A red dot indicates

we have not received your membership dues for 2004. Unless we hear from you, renewing your membership or correcting our records, you will no longer receive the newsletter. However, we would welcome your continued support.

***Moving? Please let us know your new address.***

It helps us keep the mailing list current and save the 50¢ return postage! Bulk mail is not forwarded.

## Cleveland County Genealogical Society

### OFFICERS

President	Jo Mustoe
Past President	Alan Montgomery
First Vice President	Greg Boyd
Second Vice President	Julia Mills
Secretary	Jean McCracken
Treasurer	Ray Mills
Members at Large	Pam Bias Mary Lewis Ralph Wilson

### Please Support our Corporate Members

Arvest Bank  
BancFirst  
Couch Communications  
Digital Archiving Solutions  
Keith Reames, Jr., Edward Jones  
David B. Howell, Farmers' Insurance  
Morren's Custom Draperies  
Norman Transcript  
Primrose Funeral Home  
Republic Bank & Trust  
Sunset Memorial Park  
Waggoners' Heating/Air Conditioning  
Walden Cleaners

## Cleveland County Genealogical Society Meetings

### ***June Meeting***

Annual Business Meeting  
7:00 p.m. Tuesday June 15, 2004  
Place To Be Announced

### ***19th Annual Seminar***

Saturday, July 17, 2004  
Brand Senior Center, Moore

***July & August*** - No Meetings

### ***September 21***

Society meetings resume

### ***WRITERS GROUP***

June 9  
July 14  
August 11

### ***CCGS BOARD***

**June 7** Board Meeting  
**July & August:**  
No meetings unless called.

**Joint meetings of CCGS and MCGHS will resume in the fall.**

## Calendar of Events

### McClain County Genealogical & Historical Society Meetings

***Tuesday May 18, 10 a.m.***  
McClain County Museum  
Planning for Chautauqua activities

***June, July, August*** No meetings  
unless specially called

**The McClain County Museum**  
will be open 1:00–4:00 p.m. during  
Chautauqua, June 11 through 15.  
Regular museum hours resume  
June 16

***Chautauqua***  
June 10-15, 2004  
Chandler Park, Purcell